

## WIRELESS AUTOMATIC WEATHER STATION





The new Davis Vantage Vue weather station combines Davis' legendary accuracy and rugged durability into a compact station that's easy to set up and use. Vantage Vue includes a sleek but tough outdoor sensor array and a distinctive LCD console. Its unique Weather Center function provides additional information on each weather variable. In addition, Davis has made Vantage Vue radio-compatible with our flagship Vantage Pro2 professional stations so you can mix-and-match most components

**Station Includes:**

- Integrated Sensor Suite including temperature, wind, and rain sensors

**Console**

- **TIME & DATE**  
View the current time and date or time of sunrise/sunset.
- **MOON PHASE**  
See the eight phases of the moon from new to full.
- **FORECAST ICONS**  
Icons let you know to expect sun, part sun, clouds, rain, or snow.
- **TEMPERATURE & HUMIDITY**  
Console updates outside temperature every 10 seconds and inside temperature every minute. In addition, outside humidity Updates every 50 seconds and inside humidity every minute.
- **RETRANSMITS**  
Main console can extend range to additional consoles up to 1,000 ft. (300 m).
- **BAROMETER**  
Five-position trend arrow shows whether barometric pressure is rising, falling, or stable.
- **VARIABLE DISPLAY OPTIONS**  
See updated variables every 10 seconds for heat index and wind chill to get a better "feel" for the outside environment.
- **RAIN**  
Console updates rain totals and rain rate every 20 seconds for the last 25 hours, days, months.
- **"CHANGE IN WEATHER SINCE YESTERDAY" FEATURE**  
Allows comparisons of changes of temperature and barometric pressure from day to day.
- **WEATHER CENTER**  
Weather Center provides additional information for each weather variable, such as daily highs and lows, temperature changes by the hour and barometric value changes. Also displays astronomical data such as meteor showers.
- **USER-FRIENDLY KEYPAD**  
Domed buttons are easy to sense and press. Glow-in-the-dark keypad buttons give you access to weather information all day and all night. The Done key returns user to "current" screen from anywhere in the program.
- **GRAPHS**  
Graph the last 25 hours, days or months. View up to 50 graphs including temperature, rain, rain rate, wind and barometric pressure—all on the console.
- **"THIS TIME YESTER DAY" FEATURE**  
Data point on the graph indicates the weather during the same time yesterday to help compare and analyze day-to-day weather trends.

- **ALARMS**  
Set 22 simultaneous, different alarms to warn of dangers such as high winds, freezing temperatures, rain rate, flood warning, and more.
- **WIND SPEED**  
See windspeed updates every 2.5 seconds. Displays windspeed in miles per hour, meters per second, kilometers per hour and knots. Provides the average and high wind speed for two-minute and ten-minute intervals.

## **ISS**

- **WIRELESS**  
Frequency-hopping spread spectrum radio ensures consistent transmission up to 1,000 ft. (300 m) from integrated sensor suite to console.
- **RAIN COLLECTOR**  
Self-emptying tipping spoon measures rain with .01" (0.2mm) resolution.
- **ANEMOMETER**  
Vantage Vue records wind speeds as low as 2 mph (3 km/h) and as high as 150 mph (241 km/h).
- **WEATHER PROOF COVER**  
Corrosion-resistant cover provides durability in extreme conditions. Electronics are potted or over-molded for added moisture shielding.
- **RADIATION SHIELD**  
Provides excellent protection from solar radiation and other sources of radiated and reflected heat.
- **TEMPERATURE/RELATIVE HUMIDITY**  
Provides outside temperature readings from -40°F to 150°F (-40°C to 65°C). Also measures relative humidity from 0 to 100%.
- **EASY INSTALLATION**  
Installs easily and quickly with included mounting hardware kit.
- **WIND DIRECTION**  
Measures wind direction in compass points or degrees.
- **SOLAR PANEL**  
Energizes the station during the day. On-board super capacitor provides power at night. Lithium battery provides backup when needed.
- **BUBBLE LEVEL**  
Allows for more accurate installation and better data collection.

## **Specifications**

Transmission up to 1,000 ft. (300 m)

Frequency-hopping spread spectrum radio for continuous data transmission

Solar-powered with stored energy backup

Survived cyclic corrosion tests simulating wear in extreme weather environments

22 user-selectable alarms

12-hr forecasts

Barometric pressure reporting

**RAIN COLLECTOR:** Reports rain rate and rain totals. Self-emptying tipping spoon measures rain with 0.01" /0.2mm resolution

**ANEMOMETER:** Vantage Vue records wind speeds as low as 2 mph (3 km/h) and as high as 150 mph (241 km/h).

**WIND DIRECTION:** Measures wind direction in compass points or degrees.

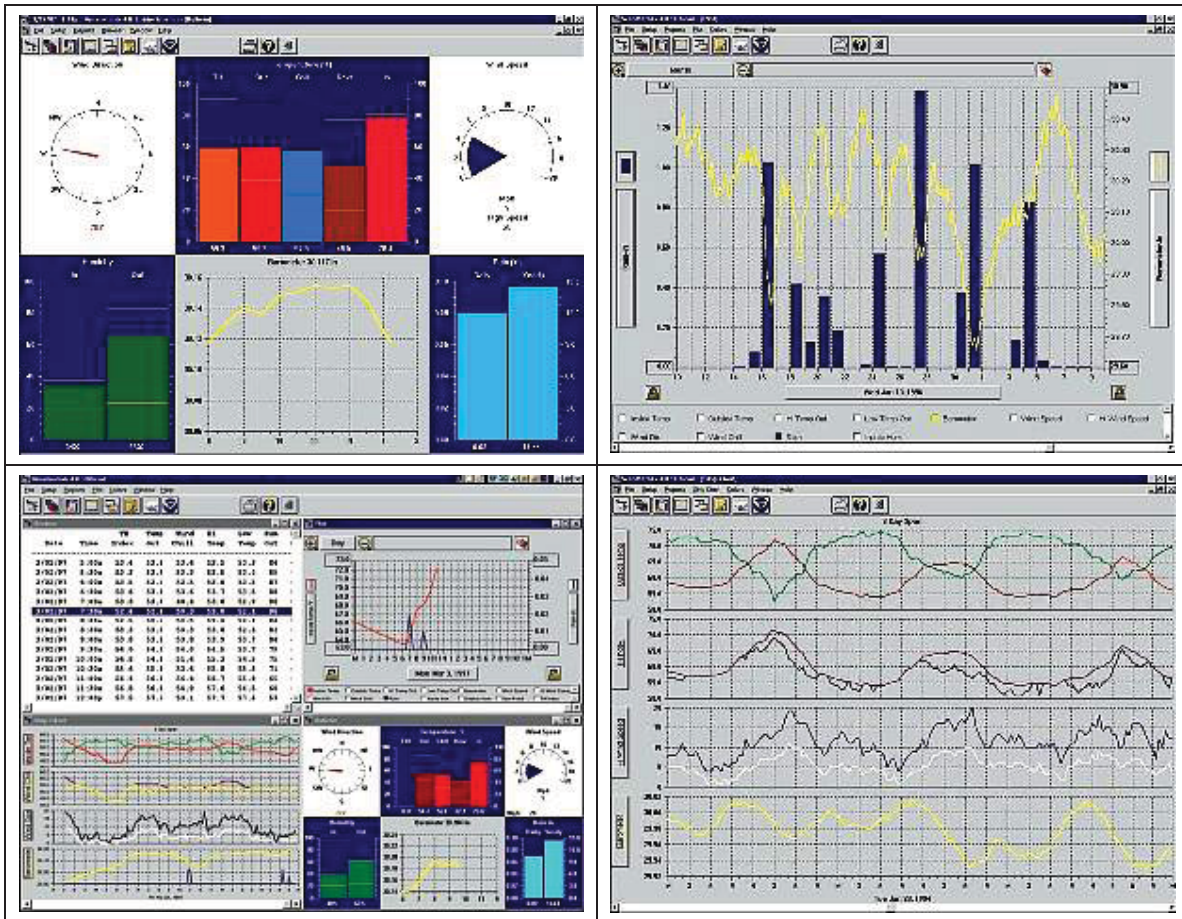
**TEMPERATURE/RELATIVE HUMIDITY:** Indoor and outdoor temperature and humidity sensors. Provides outside temperature readings from -40°F to 150°F (-40°C to 65°C). Outdoor sensors contained in radiation shield for optimum accuracy. Also measures relative humidity from 0 to 100%.

**BUBBLE LEVEL:** Allows for more accurate installation and better data collection

## WEATHER LINK SOFTWARE AND DATALOGGER

For the ultimate in weather data collection, analysis, and display, You can connect Vantage Pro2 to your personal computer. The WeatherLink data logger fits neatly into the Vantage Pro console, storing your weather data even when the computer is off. Transfer data to the PC when you like—every minute or every six months. Later, use the WeatherLink software to create graphs, generate summaries, and more—all with your own weather database.

WeatherLink's newest feature lets you share your weather with the world on your own weather web site. Use one of our sample templates or design your own. WeatherLink software establishes the Internet connection and transfers the files using FTP.



### With WeatherLink you can:

- See current conditions at a glance on the instant weather bulletin.
- Graph data on a daily, weekly, monthly, or yearly basis.
- Generate Weather Watcher reports in National Climatic Data Center (NOAA) format.
- Track information from multiple weather stations on the same computer using one WeatherLink for each weather station.
- View information from the same weather station on two or more computers using an Extra User License for each computer. Kit includes license, manual, and software.

### With the integrated FTP and HTML features you can:

- Post current and historical weather conditions to your web site or LAN.
- Create weather web pages with our included HTML templates, or design your own.

- Add bar graphs, line graphs, text lines, or scrolling ticker tape displays with included Java applet.
- Upload other files—such as images from a webcam—along with your weather data.

**With the data storage and transfer features you can:**

- Choose a storage interval of 1, 5, 10, 15, 30, 60, or 120 minutes.
- Store up to six months worth of data, depending on the chosen storage interval. The data logger uses non-volatile memory, so you won't lose the data in the logger, even if you lose power.
- Transfer data from the data logger to your computer as often as you like to create your own weather database.
- Transfer data and clear highs and lows automatically each day.  
(The software must be running to use this feature.)

All of the following are included:

- Software on disk
- Data logger
- Detailed instruction manual
- Mounting accessories
- 8' (2.4 m) cable to connect the data logger to your computer